



**AMICO** &CO

**REMADE IN ITALY**  
HIGH-END REFIT & REPAIR SOLUTIONS

FOLLOW OUR PERFECT REFIT SERIES HERE



[amicoshipyard.com](http://amicoshipyard.com) | [#refit](https://twitter.com/refit) | [#remadeinitaly](https://twitter.com/remadeinitaly)



A world leader in its field, Amico & Co exclusively operates in the large yacht refit and repair sector, with a 90% international client base, performing over 110 projects annually on vessels from 30 to 140m LOA.

Founded in 1991 and family-run ever since, the shipyard has a 4000T ShipLift for hauling, launching and manoeuvring megayachts of up to 95m LOA, a covered 102m dry-dock and a new berthing facility, Waterfront Marina. Located in Genoa Port, stretching over >60,000 m<sup>2</sup>, the yard can dry-dock vessels of up to 100m in covered sheds and is known for its in-house departments, high quality standards and for how it manages projects on-time and on-budget.

6 additional slots on the hard for yachts of up to 95m LOA/4,000T

Additional shipyard area: 15.000m<sup>2</sup>

ShipLift rails flush to the hardstanding

Entirely zero emission electrical system

## 4000T SHIP LIFT FOR HAULING & MANOEUVRING SUPERYACHTS

Amico & Co's bespoke ShipLift consists of a submergible platform housed in a dedicated structure that lifts vessels up to dock level using a series of synchronised winches. A trestle and track system manoeuvres vessels over the hard from the lift platform to slots which are independent of each other.

## 102M GRAVING DOCK IN THE SHIPYARD

Sheltered graving dock equipped with heating, ventilation and emission treatment systems for painting works, with a telescopic cover which opens in the middle to permit cranae.



**LOA 102m / BEAM 21m / AIRDRAFT 31m / DRAUGHT 7.4m**



## REFIT HANGARS DESIGNED FOR SUPERYACHTS

Ten covered refit slots, fully equipped with centralized systems such as heating, overspray recovering, lighting and all the other necessary utilities, including TV antennae and black water, for refits, painting and teak works.

## SLOTS ON THE HARD UP TO 95M

After hauling via ShipLift or Travel Lift, vessels can use Amico & Co's multiple hardstanding slots, including 6 independent slots up to 95m, one equipped with a semi-permanent 63m painting hangar.



Painting hangar with opening roof to allow mast entry



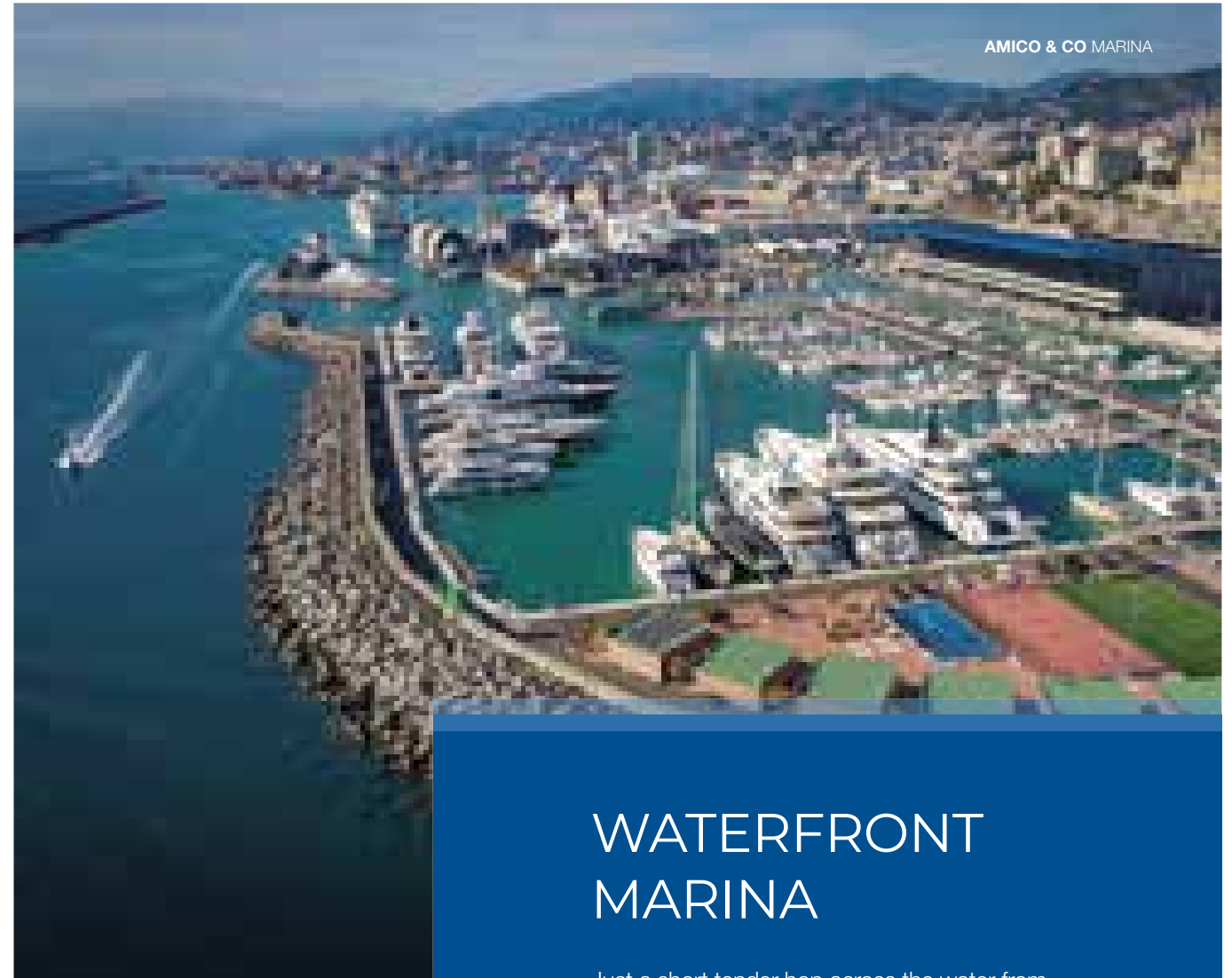
Shore power [ up to 1000 Ampere ]  
Wifi [ throughout the entire shipyard ]

## FULLY EQUIPPED TECHNICAL MARINA

Amico & Co's fully equipped technical marina borders the hardstanding, providing a protected calm water area. Thanks to an external 80m dock, this marina can provide 14 refit berth, of which 7 alongside berths.

## STATE-OF-THE-ART TRAVEL LIFT SYSTEM

Using the 835T Travel Lift, the docking team can haul out, transport inside a refit shed and hull block a 60m LOA yacht in just one working day following its arrival in the shipyard. A 320T Travel Lift is also available for hauling smaller vessels.



## WATERFRONT MARINA

Just a short tender hop across the water from Amico & Co, just 15 nm by sea from Portofino and a 15 minute transfer ride from Genoa's international boutique general aviation hub, Waterfront Marina is a brand new berthing facility with 26 moorings for vessels up to 110m, located in the Genoa city centre area known as the home to Genoa's world famous Boat Show, for berthing before, after or outside of a refit period.





# YOUR GENOA CITY CENTRE HOMEPORT



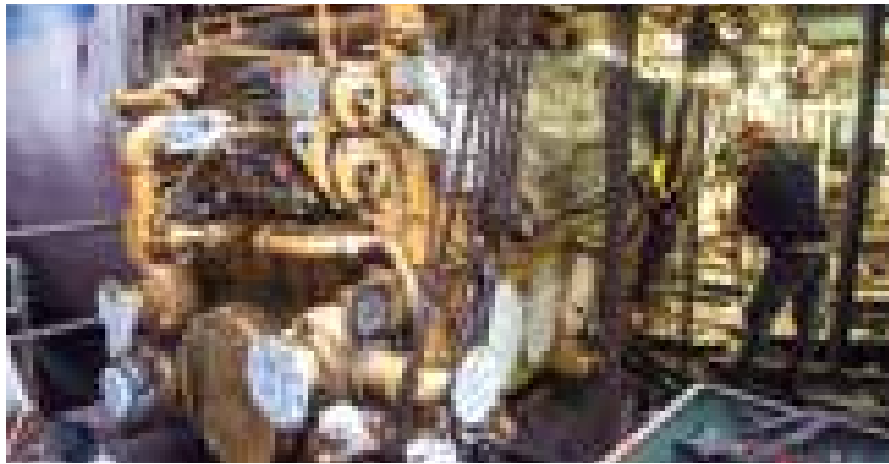
## TOP CLASS CREW FACILITIES

The marina has exclusive crew facilities including on-site concierge, three sports fields (padel, tennis/5-a-side, basketball/multisports), fully equipped gym, yoga studio and changing rooms, fully equipped independent crew kitchens, crew lounge area, meeting and training rooms, laundry, restrooms, equipped barbecue area, parking and a free evening shuttle transport service around Genoa.

## IN-HOUSE DEPARTMENTS

Amico & Co, with the support of specialized workshops on site, can cater for up to thirty-five different yacht projects at any one time, offering the best arrangement for each phase of the job.

The shipyard has over 4,500m<sup>2</sup> of workshops, of which 1,600m<sup>2</sup> dedicated to carpentry and shipwrights and 900m<sup>2</sup> to engine and mechanical facilities. Recently the range of services available in the metalwork specialty has been stepped up, with dedicated workshops equipped with specialised equipment for cutting and welding as well as pantographs and bending machines.



## METALWORK

### IN-HOUSE COMPANY

An experienced on-site team is available for design, construction and modifications, handling any type of metalwork, from complex lengthening projects and/or structural modifications, including prefabrication of hull and superstructure blocks, to more routine installations and pipe works.







# YACHT PAINT

## IN-HOUSE DEPARTMENT

Amico & Co can offer a full, in-house service dedicated to premium grade, certified, and guaranteed yacht paint projects from primer to top coat refinishing.

## PAINTING QUALITY STANDARDS

Amico & Co produces premium grade, certified, and guaranteed painting projects. Measurements are performed by professional coating inspectors employing equipment certified in keeping with international paint finishing standards.

### HVA Light Colours

Description	Amico & Co average	Market standards
GLOSS	91 GU	87-89 GU
DOI	92 DOI	90 DOI

### HVA Dark Colours

Description	Amico & Co average	Market standards
GLOSS	91 GU	88-90 GU
DOI	92 DOI	90 DOI




# ENGINEERING

## IN-HOUSE DEPARTMENT

A team of 15 skilled technicians and 6 specific engineering project managers working in a 900m2 workshop can provide engineering, shaft alignment, engine and generator servicing, as well as full repowering.

 **MTU**  
In-house and official service

 **Northern Lights**  
In-house and official service

AMICO & CO DEPARTMENTS

 **Caterpillar**  
In-house and official service

 **Idromar**  
In-house and official service





## JOINERY

### IN-HOUSE DEPARTMENT

The Amico & Co facilities include 1,600m<sup>2</sup> of fully equipped workshops for wood, offering dedicated craftsmanship with thirty years of experience in this field.



## DESIGN & INTERIORS

### IN-HOUSE DEPARTMENT

Amico & Co can provide complete designs for the refurbishment and refitting of yacht interiors and external furnishings, including structural alterations and systems installation or upgrading.

# DRY-DOCKS IN THE PORT OF GENOA

Amico & Co also uses dry-docks in the Port of Genoa, including #2 dry-dock which can accommodate two yachts of up to 90m



## RETRACTABLE COVER IN SECTION #1

The fore section of dry-dock #2 is equipped with a 90m retractable shed which has temperature and humidity control, overspray recovery and filtration systems, perfect for large vessel paintjobs.



# LUIGI AMICO

Our technical partner  
for surface preparation  
and protective coating

Luigi Amico S.r.l., sister company of Amico & Co shipyard, is a leader in the surface treatment and coatings market in Italy. Luigi Amico offers experience and hi-tech solutions for surface preparation and treatment, both inside and outside the hull.



**Luigi Amico Srl**  
Calata Gadda - Porto di Genova  
16128 Genoa (GE) - Italy  
T +39 010 2470487  
E [luigi.amico@amicoshipyard.com](mailto:luigi.amico@amicoshipyard.com)  
[www.luigiamico.it](http://www.luigiamico.it)

# ASSOCIATION & CERTIFICATIONS

## THIRTY YEARS OF HIGH-QUALITY WORK EXPERIENCE

Amico & Co has a long experience of working to meet all Flag, State and Class regulations, and interacts with important associations such as **Confindustria**, **ICOMIA** and local maritime cluster **Genova For Yachting**. It was the first Italian shipyard to attain environmental management standard certificate **ISO 14001**.

Since 2017 Amico & Co has been an **Authorized Economic Operator**, an internationally recognised quality mark indicating businesses

that fulfil specific criteria of having good tax and customs compliance history and whose role in the international supply chain is secure.

Amico & Co is a partner of **The Superyacht Life Foundation**, who champion the positive people, places and projects surrounding the superyachting good life and is also a proud member of **Altagama**, the association which brings together Italy's premiere cultural and creative industries, promoting Italian excellence.





## AMICO LOANO SHIPYARD

A top-quality boutique yacht shipyard on the Italian Riviera, halfway between SOF and Genoa

From the renowned experience of the Amico Group in the world of yachting, Amico Loano is a modern and dynamic boutique shipyard with a complete range of services. Equipped for motor and sail yachts up to 55m LOA, with a 600T lifting capacity, the shipyard combines technological innovation, high quality services and traditional Ligurian professionalism.



**Franco Cattai**  
SHIPYARD DIRECTOR  
Email: [franco.cattai@amicoloano.com](mailto:franco.cattai@amicoloano.com)  
Office: +39 019 673765

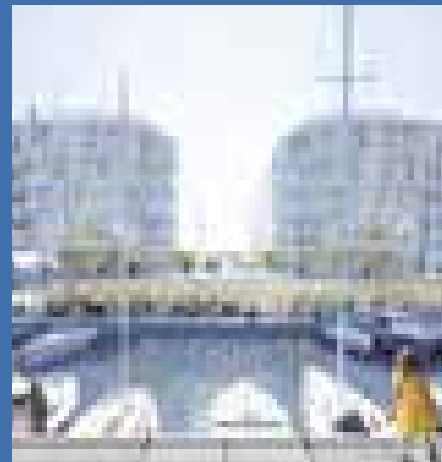
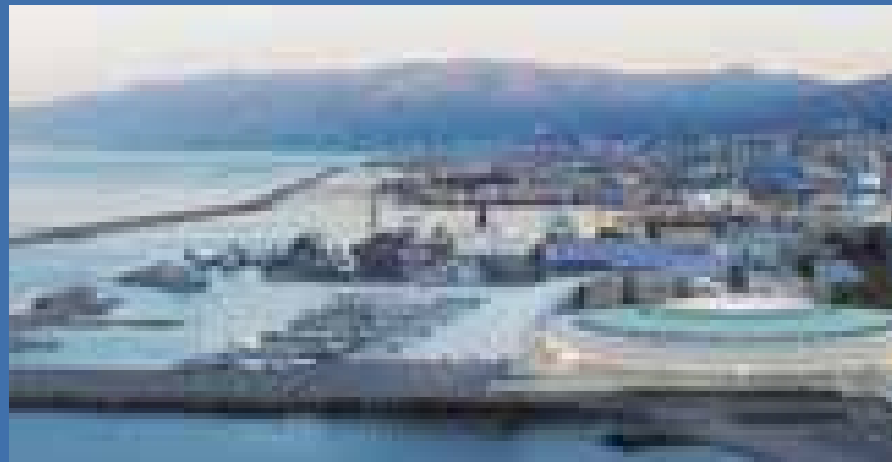
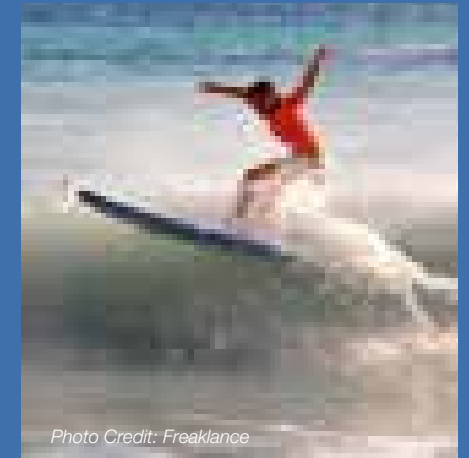
**Amico Loano Srl**  
Lungomare Madonna del Loreto - Porto di Loano  
17025 Loano (SV) - Italy  
T +39 019 673765  
E [amico@amicoloano.com](mailto:amico@amicoloano.com)  
[www.amicoloano.com](http://www.amicoloano.com)



# GENOA IS CHANGING

Flaubert declared that Genoa, Italy's largest sea port, had 'a beauty that tears the soul'. Whilst history feels alive in the extensive old city, Genoa has undergone radical makeovers and the old town has a bright new crop of fashionable shops and a host of trendy eating and drinking options.

The new Waterfront di Levante development is the new urban complex that is revolutionizing the image of the city. A project of importance penned by the Renzo Piano Building Workshop, creating a journey of extraordinary emotions.



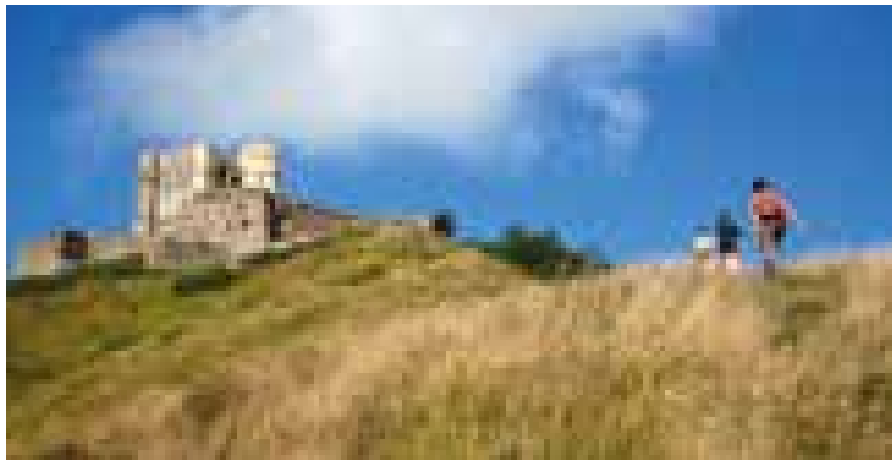
A city with a solid nautical tradition, Genoa is home to every sort of trade and service connected with yachting. Amico & Co and Pesto Sea Group have created the territorial marketing project Genoa Superyacht Hub, to aid superyacht Owners, Captains, Managers and crews discover just how much the area has to offer. Genoa has over 1,000 superyacht visits per year for a total of 40,000 days and around 6,000 crew members (2020).

To find out more, visit [genoasuperyachthub.com](https://www.genoasuperyachthub.com)

# CREW SERVICES

## IN-HOUSE DEPARTMENT

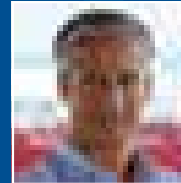
Every day our highly qualified concierge unit offers a wide range of services studied to fulfil our clients' needs – crew, management and visiting contractors - including accommodation, car rental, healthcare and wellness appointments catering, excursions, ski trips and teambuilding activities. Amico & Co has a dedicated crew area in Waterfront Marina with kitchens, lounges and laundry, where crew events and courses are held.



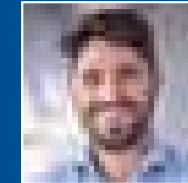
# AMICO & CO CONTACTS

## TECHNICAL & SALES MANAGEMENT

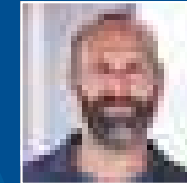
technical.sales@amicoshipyard.com  
Office: +39 010 2470067



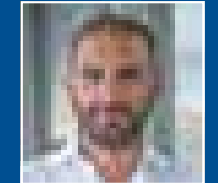
**Alberto Amico**  
CHAIRMAN



**Daniele Di Giampaolo**  
DIRECTOR, TECHNICAL & SALES



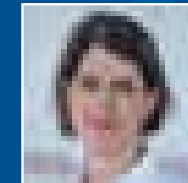
**Manuel Di Tillio**  
TECHNICAL & SALES MANAGER



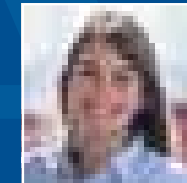
**Gerardo Ferrari Fontana**  
TECHNICAL & SALES

## CLIENT RELATIONS

crew@amicoshipyard.com - booking@genovawaterfrontmarina.com  
Office: +39 010 2470067



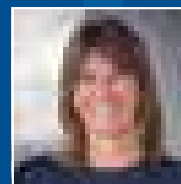
**Jessima Timberlake**  
MARKETING SUPERVISOR  
& INTELLIGENCE



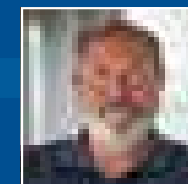
**Giulia Cominotti**  
TECHNICAL & SALES  
ASSISTANT

## WATERFRONT MARINA

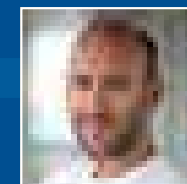
booking@genovawaterfrontmarina.com  
Office: +39 010 2753100



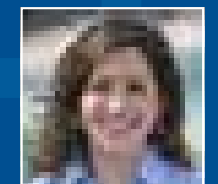
**Valentina Peri**  
SALES & MARKETING



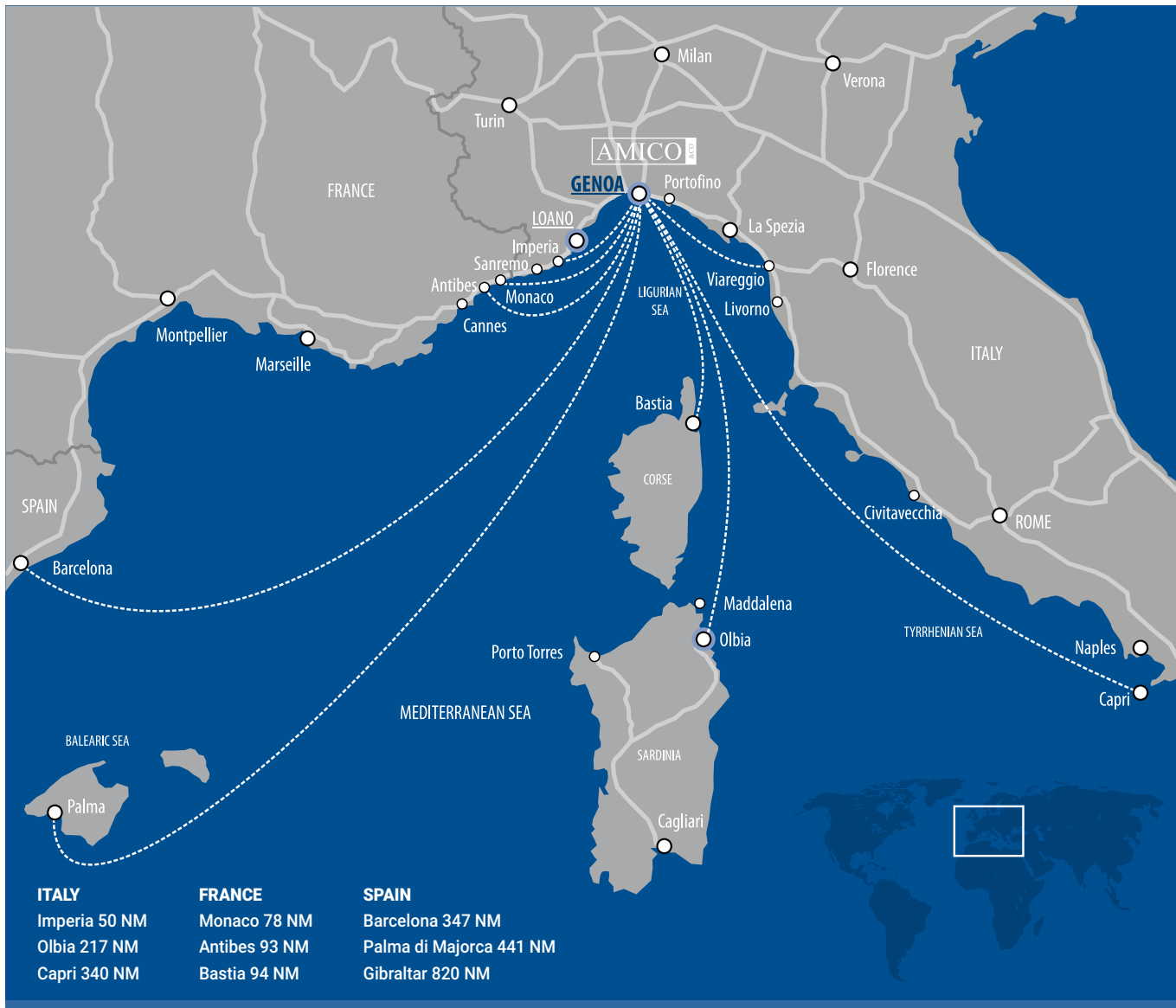
**Gabriele Bassetti**  
HARBOUR MASTER



**Luca Armodi**  
MARINA OPERATIONS



**Clelia Frignani**  
HOSPITALITY & CREW SUPPORT  
crew@amicoshipyard.com  
crew@genovawaterfrontmarina.com



**AMICO** & CO

**Amico & Co Srl**

Via dei Pescatori, 16128 Genova - Italy

T: +39 010 2470067

E: [amico.yard@amicoshipyard.com](mailto:amico.yard@amicoshipyard.com)

[www.amicoshipyard.com](http://www.amicoshipyard.com)

